

Urgent Return receipt Expand Group Restricted Prevent Copy Confidential

Christina Ki Na LEE/PLAND

寄件者: Christina Ki Na LEE/PLAND
寄件日期: 2026年05月14日星期四 15:32
收件者: tpbpd/PLAND
主旨: Fw: A/YL-PN/89 supplementary information
附件: program detail.pdf; 填土範圍圖2.pdf

From: Jeff [REDACTED]
Sent: Monday, May 11, 2026 11:40 AM
To: Christina Ki Na LEE/PLAND <cknlee@pland.gov.hk>
Subject: A/YL-PN/89 supplementary information

Dear Miss Lee,

Please find the attached supplementary information for A/YL-PN/89 case.

Best regards
Jeff

1. 申請地點貼近后海灣海岸線, 為各到訪人士提供非常理想根據地, 有效進行不同的研究考察及活動。
2. 主要活動包括:
 - i) 義工(學校及志願團體)定期進行附近沙灘清潔行動, 入侵物種(如大米草)移除/控制
 - ii) 馬蹄蟹生態研究活動(與城市大學, 海洋公園, TNC 等合項個)
 - iii) 蠔礁修復工程(TNC合作項目)
 - iv) 后海灣泥灘生態認識和保育
3. 申請地點相對較為平坦, 而且入口處設有政府路段避車處(不在本次申請範圍), 方便傷健及需照顧人士到訪, 提供/促進傷健共融的戶外活動的安全空間
4. 入口處設有33號專線小巴及NR941居民巴士站, 亦有到訪人士自行乘搭的士前來, 團體多以旅遊巴前來, 並於入口旁避車處短暫停留上落客
5. 申請地點周界以1.5米高圍欄分隔
6. 現階段進行修復工程, 停止對外開放
7. 中心預算最多每天接待兩時段訪客, 每時段不多於40人, 每天最多80人

Project 項目名稱 : 新界元朗白泥丈量約份第 135 約地段第 68 號(部份)、第 70 號(部份)、第 71 號(部份) 土地	Remarks 備註 :		
	Drawing Title 圖紙標題 補充說明		



PAK NAI RESTORATION: AQUACULTURE DEBRIS CLEAN-UP

PROJECT OVERVIEW

Shellfish reefs are the most endangered marine habitat on the planet with an estimated 85 percent global loss. In nature, oysters naturally grow and accumulate on small reefs along intertidal mudflats, providing feeding grounds for unique species from shorebirds to tiny crabs. Hong Kong was once covered with these shellfish reefs, but centuries of human activities and development have greatly reduced this critical habitat.

At the same time, oyster shells and concrete poles (as known as the abandoned oyster farms) from oyster aquaculture create excess debris on the shorelines of Pak Nai, that degrade crucial habitats of endangered horseshoe crabs. The abandoned oyster farms and debris also reduces space left for native plant species like seagrass beds to grow. But oyster shells are a valuable resource with multiple uses. They are optimal material for building new oyster reefs, can be used as natural fertilizers in organic agriculture and help increase awareness through public engagement activities.

OUR RESTORATION WORK

Along with our partners, Ha Pak Nai Education Center (HPNEC) and The Nature Conservancy (TNC) has established a management scheme in Pak Nai, to restore its native habitats such as oyster reefs, seagrass beds, mangroves and soft shore, for the benefit of endangered horseshoe crabs and other species.

ACTIVITY

Recognizing this opportunity to both restore natural habitat in Pak Nai as well as rebuild shellfish reefs in other parts of Hong Kong, this program is inviting volunteers to help.

The now-abandoned oyster farms were built following a traditional method of planting concrete poles in concentrated rows where oysters can settle to and grow on. However, these farms have been abandoned for ten years and are no longer in use. To restore Pak Nai's natural shorelines, we will remove these poles and reconfigure them into more natural reefs. Volunteers are involved in rehabilitate horseshoe crab habitat by clearing and collecting debris off the mudflat so that it can be re-purposed to build new oyster reefs in areas where they have been lost or recycled for other uses.

WHAT TO WEAR AND BRING

The field activity will conduct on mudflats with no shade. Areas are deep and muddy, thus

appropriate clothing must be worn:

- **Waterproof booties or sneakers (booties can be provided by HPNEC/TNC; please provide shoe size in advance)**
- **Sportswear or any suitable outdoor clothing such as leggings or long, athletic pants**

While gloves and necessary tools will be provided, we strongly suggest bringing the following items:

- **Plenty of water (please avoid single-use plastic bottles)**
- **Sun protection such as a hat and sunglasses**
- **Change of clothing**
- **Raincoat (if raining)**
- **Personal towel for wiping off mud**
- **Insect repellent**

ACTIVITY LOCATION

The field activity will take place on the mudflats of Pak Nai, Deep Bay. The site is directly accessible by private transport or taxi. We suggest that large volunteer groups hire a private coach for the duration of the activity.

Toilets and water hose are available for cleaning up; Snacks and chilled drinks available at App store.

Address: [App Store](#)

No. 283A, Nim Wan Road, Pak Nai (鴨仔坑士多)

IN-DEPTH

Activity Overview:

- Welcome and on-site briefing (15 mins)
- Eco-touring of biodiversity on Pak Nai mudflats (15 mins)
- Volunteer activity (2 hrs)
- Tidy up and wash off (30 mins)

Requirements:

- Participants should be physically able to do strenuous work such as lifting heavy materials under the sun.
- Participants should be minimum 12 years of age, participants aged 12 to 16 years old should be accompany by parents or adults.
- Minimum group size is 20 pax; maximum 50 pax.

CONTINGENCY PROCEDURE

The safety of our staff and volunteers are our main priority. We will take into consideration any disruptions that may occur and notify our volunteers accordingly. The activity would be canceled if any of the following warnings are hoisted 3 hours prior to the activity started :

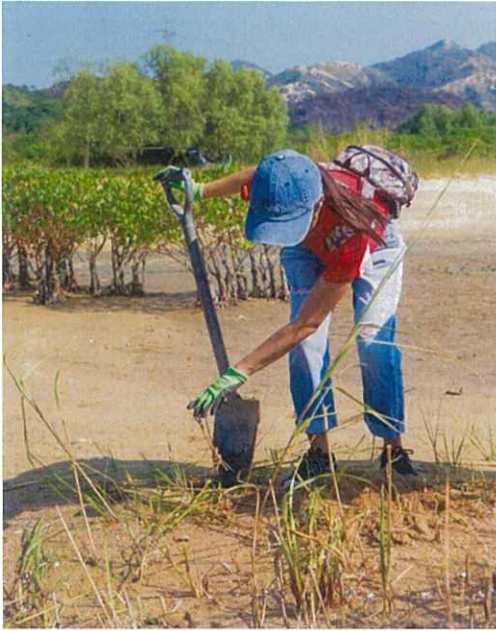
- All rainstorm warnings: Amber, Red & Black
- Typhoon warning T3 & above

Activity will continue under "Very Hot Weather Warning" and "Thunderstorm Warning", however, duration of outdoor field work and eco-tour maybe shortened.



Covered venue for resting and briefing at App Store.





PAK NAI RESTORATION: REMOVAL OF INVASIVE CORDGRASSES TO RESTORE HEALTHY MUDFLATS

PROJECT OVERVIEW

This program aims to restore some of Hong Kong's lost oyster reefs to improve water quality, increase local fish production and biodiversity, and increase natural coastal defenses against storms.

Bringing our expertise on restoring oyster reefs in over 150 sites around the world, we have deployed our first pilot oyster reef in Lau Fau Shan, Deep Bay, in early 2018.

Since 2021, we scaled up and expanded our ambitious effort to restore the natural habitats in Pak Nai, a marine biodiversity hotspot with endangered horseshoe crabs and seagrass patches, and build awareness amongst local stakeholders and tourists.

ACTIVITY

We need your help! The health of Pak Nai's mudflats are under threat. The spartina cordgrass (*Spartina alterniflora*) is a fast-growing, invasive plant species that is spreading across the mudflats of Pak Nai. As spartina cordgrass grows, it turns the wet mudflats into dry land, reducing important habitats for endangered horseshoe crabs and other intertidal animals to feed and breed. Its invasion in the mudflats also reduces space left for native plant species like seagrass beds and mangroves to grow. We invite volunteers to join us in spartina cordgrass removal and help restore Hong Kong's healthy mudflats for the benefit of both people and nature.

WHAT TO WEAR AND BRING

The field activity will conduct on mudflats with no shade. Areas are deep and muddy, thus

appropriate clothing must be worn:

- **Waterproof booties or sneakers (booties can be provided; please provide shoe size in advance)**
- **Sportswear or any suitable outdoor clothing such as leggings or long, athletic pants**

While gloves and necessary tools will be provided, we strongly suggest bringing the following items:

- **Plenty of water (please avoid single-use plastic bottles)**
- **Sun protection such as a hat and sunglasses**
- **Change of clothing**
- **Raincoat (if raining)**
- **Personal towel for wiping off mud**
- **Insect repellent**

ACTIVITY LOCATION

The field activity will take place on the mudflats of Pak Nai, Deep Bay. The meeting spot will be at TNC's Ap Tsai Hang site in Pak Nai. The site is directly accessible by private transport or taxi. We suggest that large volunteer groups hire a private coach for the duration of the activity.

Toilets and water hose are available for cleaning up; Snacks and chilled drinks available at App store.

Address: [App Store](#)

No. 283A, Nim Wan Road, Pak Nai (鴨仔坑土多)

IN-DEPTH

Activity Overview:

- Welcome and on-site briefing (15 mins)
- Eco-touring of biodiversity on Pak Nai mudflats (15 mins)
- Volunteer activity (2 hrs)
- Tidy up and wash off (30 mins)

Requirements:

- Participants should be physically able to do strenuous work such as lifting heavy materials under the sun.
- Participants should be minimum 12 years of age, participants aged 12 to 16 years old should be accompany by parents or adults.
- Minimum group size is 20 pax; maximum 50 pax.

CONTINGENCY PROCEDURE

The safety of our staff and volunteers are our main priority. We will take into consideration any disruptions that may occur and notify our volunteers accordingly. The activity would be canceled if any of the following warnings are hoisted 3 hours prior to the activity started :

- All rainstorm warnings: Amber, Red & Black
- Typhoon warning T3 & above

Activity will continue under "Very Hot Weather Warning" and "Thunderstorm Warning", however, duration of outdoor field work and eco-tour maybe shortened.



Covered venue for resting and briefing at App Store.





PAK NAI RESTORATION: RESTORING ABANDONED OYSTER FARMS INTO OYSTER REEFS

PROJECT OVERVIEW

Shellfish reefs are the most endangered marine habitat on the planet with an estimated 85 percent global loss. In nature, oysters naturally grow and accumulate on small reefs along intertidal mudflats, providing feeding grounds for unique species from shorebirds to tiny crabs. Deep Bay was once covered with these shellfish reefs, but centuries of human activities and development have greatly reduced this critical habitat.

If you have ever visited Pak Nai in Deep Bay, you may have noticed strange rows of oysters dotted along the shorelines of the mudflats. These vast rows of oyster clumps are actually abandoned oyster farms, and though the clumps are still alive, its unnatural configuration hinders the natural restoration of the environment. In addition, these man-made rows encroach on areas where the endangered horseshoe crab forage for food.

Recognizing this opportunity to restore natural habitats back to Pak Nai, **Ha Pak Nai Education Center (HPNEC) and The Nature Conservancy (TNC) is organizing volunteer activities to restore these abandoned oyster farms into shellfish reefs.**

ACTIVITY

The now-abandoned oyster farms were built following a traditional method of planting concrete poles in concentrated rows where oysters can settle to and grow on. However, these farms have been abandoned for ten years and are no longer in use. **To restore Pak Nai's natural shorelines, we will remove these poles and reconfigure them into more natural reefs.** This will restore habitat for species to forage and increase biodiversity on the mudflats.

OUR RESTORATION WORK

Overharvesting and coastal development have destroyed much of Hong Kong's shellfish reefs, degrading local marine environments and jeopardizing livelihoods. Along with our partners, Two pilot reefs have been established in Lau Fau Shan and in Tolo Harbour, to monitor their impact on biodiversity, establish a baseline of local oyster habitats and biodiversity and study the feasibility for new growth to bring back Hong Kong's shellfish reefs at scale.

WHAT TO WEAR AND BRING

The field activity will conduct on mudflats with no shade. Areas are deep and muddy, thus

appropriate clothing must be worn:

- **Waterproof booties or sneakers (booties can be provided ; please provide shoe size in advance)**
- **Sportswear or any suitable outdoor clothing such as leggings or long, athletic pants**

While gloves and necessary tools will be provided, we strongly suggest bringing the following items:

- **Plenty of water (please avoid single-use plastic bottles)**
- **Sun protection such as a hat and sunglasses**
- **Change of clothing**
- **Raincoat (if raining)**
- **Personal towel for wiping off mud**
- **Insect repellent**

ACTIVITY LOCATION

The field activity will take place on the mudflats of Pak Nai, Deep Bay. The meeting spot will be at TNC's Ap Tsai Hang site in Pak Nai. The site is directly accessible by private transport or taxi. We suggest that large volunteer groups hire a private coach for the duration of the activity.

Toilets and water hose are available for cleaning up; Snacks and chilled drinks available at App store.

Address: [App Store](#)

No. 283A, Nim Wan Road, Pak Nai (鴨仔坑土多)

IN-DEPTH

Activity Overview:

- Welcome and on-site briefing (15 mins)
- Eco-touring of biodiversity on Pak Nai mudflats (15 mins)
- Volunteer activity (2 hrs)
- Tidy up and wash off (30 mins)

Requirements:

- Participants should be physically able to do strenuous work such as lifting heavy materials under the sun.
- Participants should be minimum 12 years of age, participants aged 12 to 16 years old should be accompany by parents or adults.
- Minimum group size is 20 pax; maximum 50 pax.

CONTINGENCY PROCEDURE

The safety of our staff and volunteers are our main priority. We will take into consideration any disruptions that may occur and notify our volunteers accordingly. The activity would be canceled if any of the following warnings are hoisted 3 hours prior to the activity started :

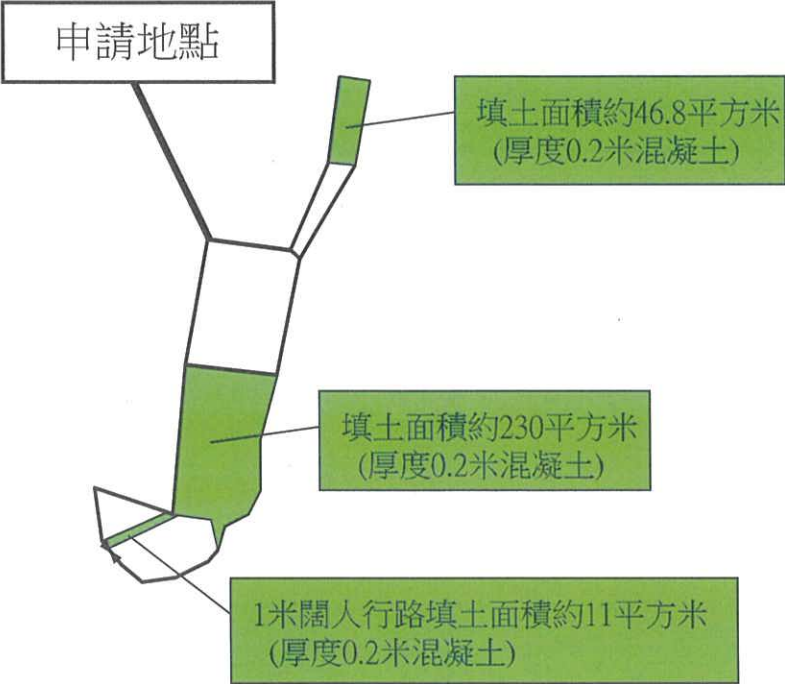
- All rainstorm warnings: Amber, Red & Black
- Typhoon warning T3 & above

Activity will continue under "Very Hot Weather Warning" and "Thunderstorm Warning", however, duration of outdoor field work and eco-tour maybe shortened.



Covered venue for resting and briefing at App Store.





Project 項目名稱： 新界元朗白泥丈量約份第135約地段第68號(部份)、 第70號(部份)及第71號(部份)土地	Remarks 備註： 填土位置	
	Drawing Title 圖紙標題： 填土範圍圖	Drawing No 圖紙號： 圖 6

Urgent Return receipt Expand Group Restricted Prevent Copy Confidential

Christina Ki Na LEE/PLAND

寄件者: Christina Ki Na LEE/PLAND
寄件日期: 2026年05月14日星期四 15:33
收件者: tpbpd/PLAND
主旨: Fw: A/YL-PN/89 supplementary information
附件: 布局陳述.pdf; supporting3.pdf

From: Jeff [REDACTED]
Sent: Monday, May 11, 2026 4:46 PM
To: Christina Ki Na LEE/PLAND <cknlee@pland.gov.hk>
Subject: Re: A/YL-PN/89 supplementary information

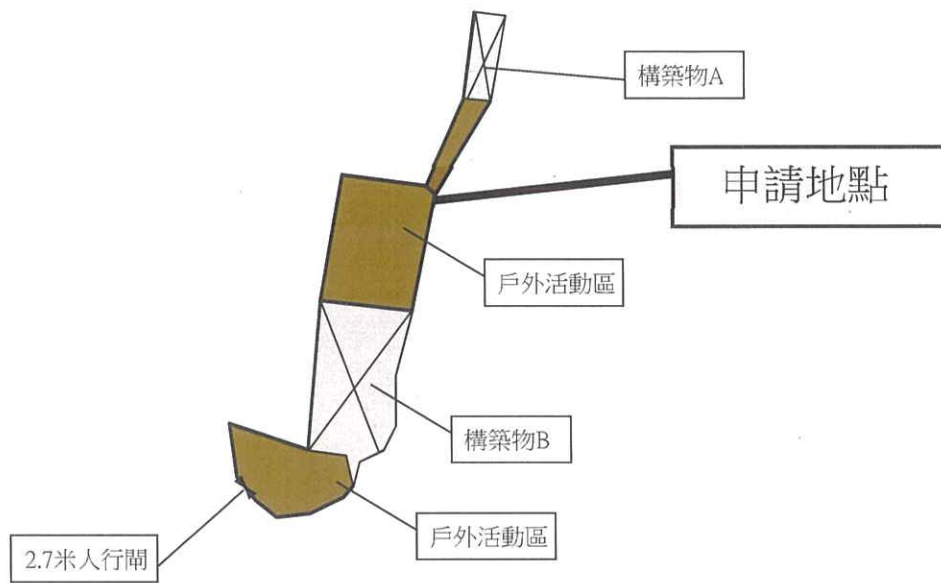
Dear Miss Lee,

Please find the attached document

Best regards
Jeff

申請地點內設有2個構築物：

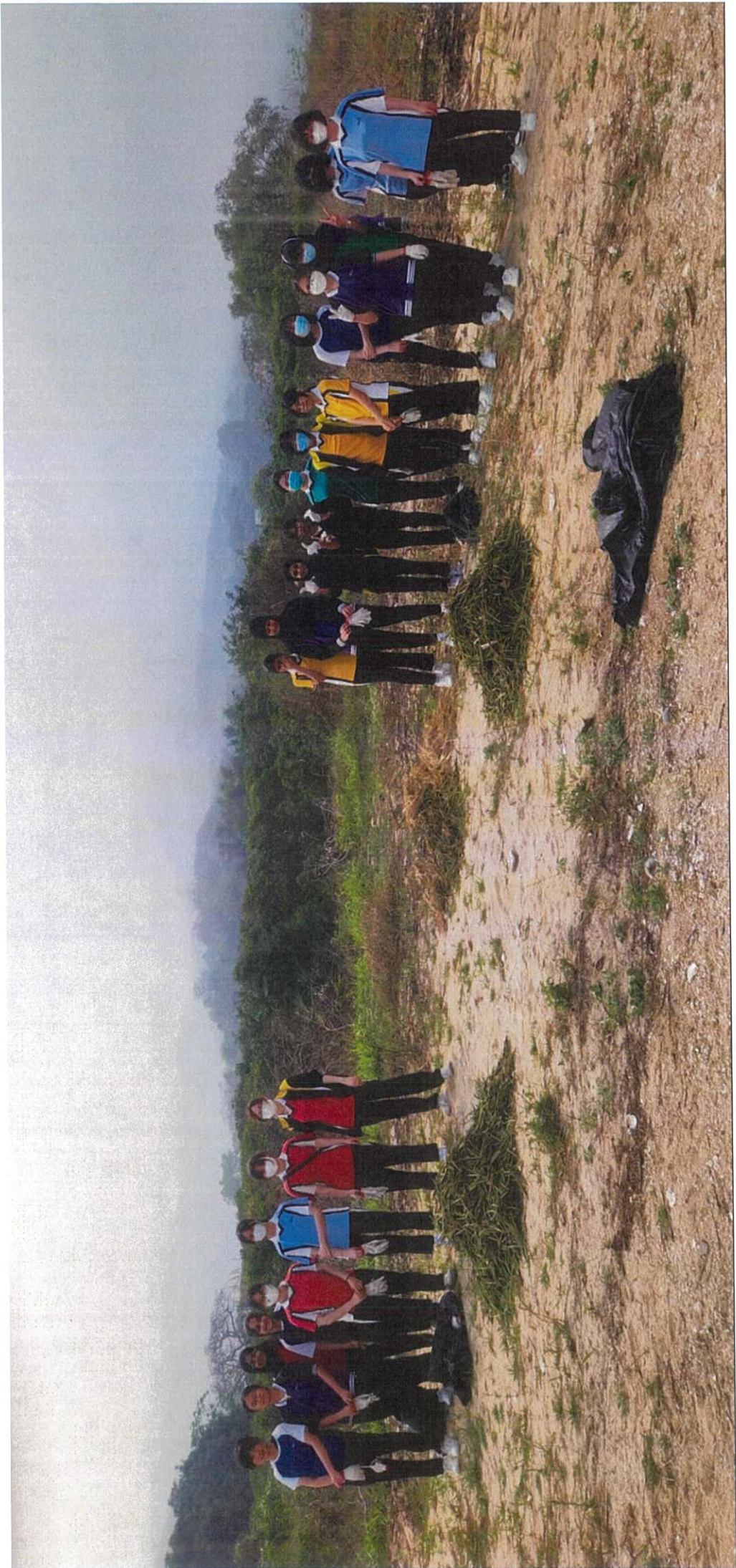
構築物	總佔地面積	總樓面面積	佈置	用途
A(1層)	46.8平方米	46.8平方米	座地不高於4米	洗手間
B(1層)	230平方米	230平方米	座地不高於7米	不密封簷篷，提供戶外休息區及存物
	276.8平方米	276.8平方米		



Project 項目名稱： 新界元朗白泥丈量約份第135約地段第68號(部份)、 第70號(部份)及第71號(部份)土地	Remarks 備註：		Scale 比例：
	Drawing Title 圖紙標題： 布局設計陳述	Drawing No 圖紙號： 圖 5	







江
玉
歡

立法會議員

信箋

Kong Yuk Foon, Doreen

Member of Legislative Council



城市規劃委員會

敬啟者：

本人早前曾拜訪下白泥村，了解村民致力推廣本港的生態及環保教育，並特意成立下白泥教育中心，以籌備各種環保教育活動，與社會各界保持緊密聯繫。

本人藉此信表達對申請地段發展為下白泥教育中心的 support，望城規會重新考慮有關申請，以便更好地保護和重視白泥這個重要的生態棲息地。

並頌

台祺

立法會議員

2025年3月31日

厦村鄉鄉事委員會
Ha Tsuen Rural Committee

新界元朗厦村鄉厦尾路 60 號
60, Ha Mei Road, Ha Tsuen, Yuen Long, N.T.

支持信

致下白泥教育中心有限公司：

元朗白泥丈量約份第 135 約地段第 68 號(部分)、第 69 號(部分)、第 70 號(部分)、第 71 號(部分)及毗連政府土地擬擬議臨時郊野教學、教育及遊客中心(為期 3 年)用途。

本會全力支持有關申請，我等希望規劃署可批准有關申請，謝謝。

厦村鄉鄉事委員會主席 鄧善恒
副主席 鄧焯倫
鄧永傑



謹啟

二零二六年四月二十二日



Department of Chemistry

香港城市大學
City University of Hong Kong

A Tat Chee Avenue, Kowloon, Hong Kong

W cityu.edu.hk

30th Apr 2026

No. 283A, Nim Wan Road,
Pak Nai Tsuen,
Ha Pak Nai Education Centre
Mr. CHENG Wai Kwan, Ken

Re: A supporting letter for the continuous operation of the public outreach and education facilities at Ha Pak Nai Education Centre (Planning Application A/YL-PN/89)

Dear Mr. Cheng,

I am writing to express my full support for the continued operation of the public outreach and education facilities at the Ha Pak Nai Education Centre, managed by your team and members of the local community.

Since 2009, I have been collaborating with the Ocean Park Conservation Foundation on the “Horseshoe Crab Rearing Program,” a school outreach initiative. In this program, mating pairs of tri-spine horseshoe crabs are induced to spawn in the laboratory at City University of Hong Kong. The resulting juveniles are then distributed to participating secondary schools, where students care for them in their school laboratories for approximately six months before releasing them into the wild during the summer. The program has been highly successful and well-received by participating schools.

In recent years, with the invaluable support of the Ha Pak Nai Education Centre, I have been able to obtain mating pairs from Ha Pak Nai for the breeding program. Additionally, I have conducted field manipulation studies in the area to investigate the natural mortality of juvenile horseshoe crabs and assess the impact of oyster rubble on their behavior and growth. These experiments would not have been possible without the Centre's support.

Over the past two years, I have also collaborated with the Chinese University of Hong Kong and the Ocean Park Conservation Foundation to explore the use of drone and AI technology to identify the foraging trails of juvenile horseshoe crabs during low tides in Ha Pak Nai. Our preliminary results have demonstrated an accuracy rate of over 90%. This innovative approach holds great promise for significantly improving the efficiency and precision of horseshoe crab population surveys.

The Ha Pak Nai Education Centre plays a vital role in supporting scientific research, conservation efforts, and public education. I strongly urge the continued operation and support of this important facility and I look forward to continued collaboration with the Ha Pak Nai Education Centre in advancing horseshoe crab conservation efforts in the years to come.

I would be grateful if the Planning Department could seriously consider this planning application (A/YL-PN/89).

Siu Gin CHEUNG (Prof.)
Associate Professor
Department of Chemistry
City University of Hong Kong

Innovating into the Future

[20-4-2026]

Dear Mr. Ken CHENG Wai Kwan,

On behalf of the MArch students of NM2050 at The Chinese University of Hong Kong, we would like to extend our heartfelt gratitude for your warm hospitality and generous sharing during our field visit to Ha Pak Nai on 15 September 2025. It was a meaningful and inspiring experience to learn directly from your dedication and efforts in protecting and restoring the unique coastal habitats of Pak Nai.

Our visit also reinforced for us the importance of the Ha Pak Nai Education Centre as a vital hub for conservation, research, and public engagement. We are impressed by your proactive effort in not only facilitating scientific research and ecological restoration but also in educating the public about responsible behaviour. By raising awareness, providing practical conservation opportunities, and guiding visitors with proper codes of conduct, your Centre has helped strengthen the resilience of Pak Nai's unique ecosystems and safeguard its biodiversity for future generations.

Witnessing the results of these efforts during our field trip left a lasting impression on all of us. We deeply appreciate how the Centre and its programs continue to engage both local communities and visitors, bridging the gap between ecological knowledge and active participation. The work that you lead has truly inspired us to consider how designers and architects can contribute meaningfully to environmental stewardship through our own practices.

Once again, we sincerely thank you for sharing your knowledge, passion, and vision with us. We hope that your valuable work at Ha Pak Nai Education Centre will continue to thrive, enriching biodiversity and fostering a stronger connection between people and nature.

Yours sincerely,

MArch Students of NM2050 Studio - School of Architecture

The Chinese University of Hong Kong

本署檔號

OUR REF.: EP/193/11/02/03

來函檔號

YOUR REF.:

電話

TEL. NO.:

圖文傳真

FAX NO.:

網址

HOME PAGE: <http://www.epd.gov.hk>

Environmental Protection Department
Environmental Infrastructure Division

88 Victoria Road,
Kennedy Town,
Hong Kong.



環境保護署
環境基建科

香港西環
堅尼地城
域多利道88號

新界元朗下白泥
下白泥村公所
下白泥村村代表
鄭偉君先生

鄭村長：

下白泥村教育中心

環保教育活動

環境保護署與下白泥村村代表 鄭偉君先生一直以來都保持緊密聯繫，為改善下白泥村的環境事宜共同努力。

自下白泥村公所成立下白泥教育中心以來，積極籌辦各類環保教育活動，致力推廣生態及環保教育，對改善環境和促進可持續發展具有重要意義，造福社會。我們對此十分支持，如籌辦環保教育活動時，需要安排參觀本署的廢物處理設施，例如各堆填區，我們將樂意提供協助。歡迎聯絡本人、冼芯賢女士(新界西堆填區)(電話：[REDACTED])或曾海頤女士(新界西堆填區擴建計劃)(電話：[REDACTED])商討。

環境保護署署長

(林峻賢 代行)



2025年7月14日

8th Apr 2026

To: No. 283A, Nim Wan Road,
Pak Nai Tsuen,
Ha Pak Nai Education Centre
Mr. Cheng Wai Kwan, Ken

**Re: Support on the continuous operation of the outreach and education facilities
at Ha Pak Nai Education Centre (A/YL-PN/89)**

Dear Mr. Cheng,

On behalf of The Nature Conservancy (TNC) Hong Kong, I am writing to express our support for the continuous operation of the outreach and education facilities at Ha Pak Nai Education Centre, (i.e. A/YL-PN/89).

The mudflats of Pak Nai are with rich marine biodiversity and are considered an outstanding ecological hotspot in Hong Kong. A variety of coastal wetland habitat types are present including mangrove forests, oyster reefs, soft shore and Hong Kong's largest expanse of seagrass *Halophila beccarii*. Pak Nai is also Hong Kong's largest nursery and foraging grounds for globally endangered Chinese horseshoe crab species (*Tachypleus tridentatus*). As of today, although the areas are designated for oyster farming under a government short-term tenancy (STT2266), it is also a popular destination for local and overseas tourists for watching sunsets, as a result, the presence of on-going threats including illegal fishing practices, invasive species, marine and other aquaculture debris, and wildlife disturbance from unregulated tourism, compromise its ecological integrity.



Figure 1. The 52 hectares of coastal area managed through community-based conservation, a collaboration between TNC, Ha Pak Nai Education Centre and local communities. (© TNC)



Figure 2. Chinese Horseshoe Crabs (*Tachypleus tridentatus*) at Pak Nai. (© TNC)
[IUCN Red List Status: Endangered/ last assessed: 2018/ Population Trend: Decreasing]

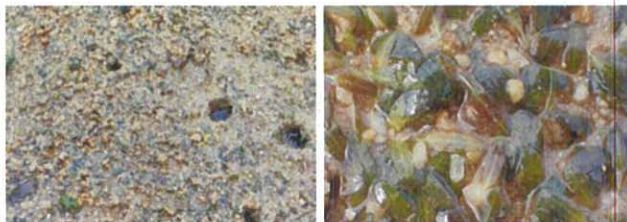


Figure 3. Ocean Turf Grass (*Halophila beccarii*) at Pak Nai. (© TNC)
 [IUCN Red List Status: Vulnerable/ last assessed: 2007/ Population Trend: Decreasing]

Since 2021, The Nature Conservancy (TNC) Hong Kong, with the support of you and the Ha Pak Nai Education Center, we have been successfully carrying out community-based conservation to restore and preserve the delicate ecosystems on site. With the manpower, venue and storage supports, and sharing of traditional local knowledge, as part of this community-based conservation, from the Ha Pak Nai Education Centre, the habitat management work, i.e. activities of oyster reef restoration, removal of invasive species, clean-ups of marine litter, and environmental education tours that tag along the school biology and geography curriculum, we have collaboratively engaged over 6,500 members of public to participate in hands-on volunteer activities, up to today, which enhance the biodiversity of Pak Nai. With the support from the center, TNC also trained over 50 university interns to conduct on-site visitor surveys and promote sustainable tourist behavior; and hosted field trips for over 1,500 students and teachers to learn about local biodiversity of Deep Bay.

The Ha Pak Nai Education Center, which is managed by you and members of the local community, has been serving as an important hub to support the aforementioned activities, and alongside your stewardship of the important ecological features at Ap tsai hang, has directly contributed to conservation success of the program. Notably, since these activities started in 2021, our scientific surveys have observed an over 190% increase in endangered horseshoe crabs. Hence, TNC believe the continuous operation of the facilities and its support to conservation works are crucial for both the local biodiversity and communities.

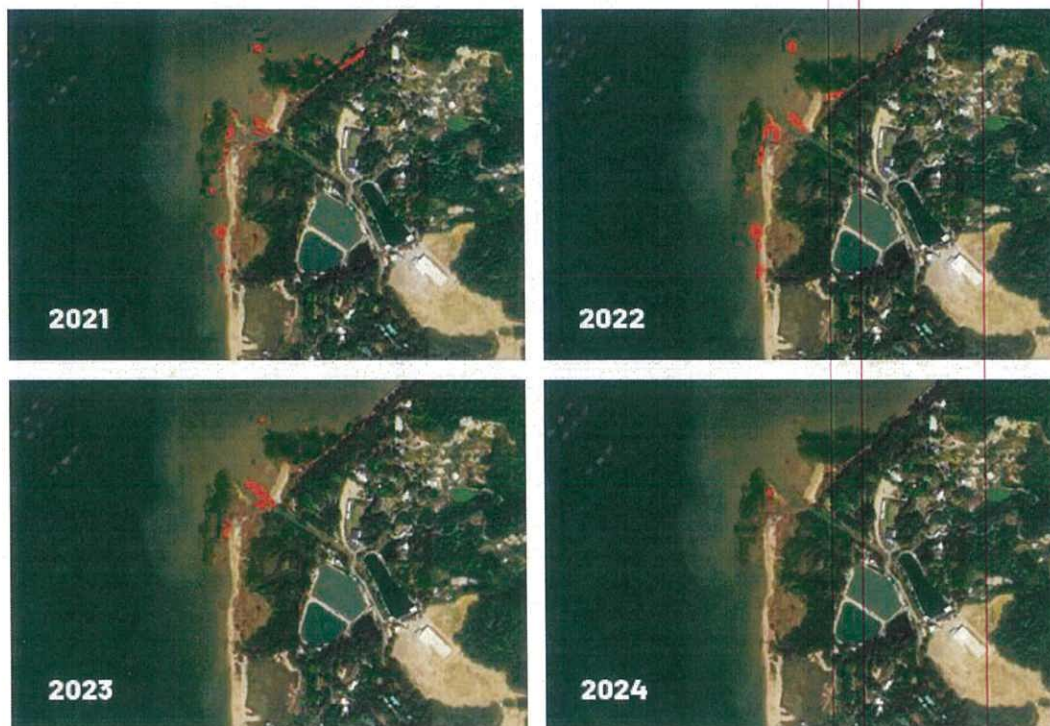


Figure 4. Decrease in areas occupied by invasive *Spartina cordgrass* (red) on Pak Nai's mudflats. (© TNC)

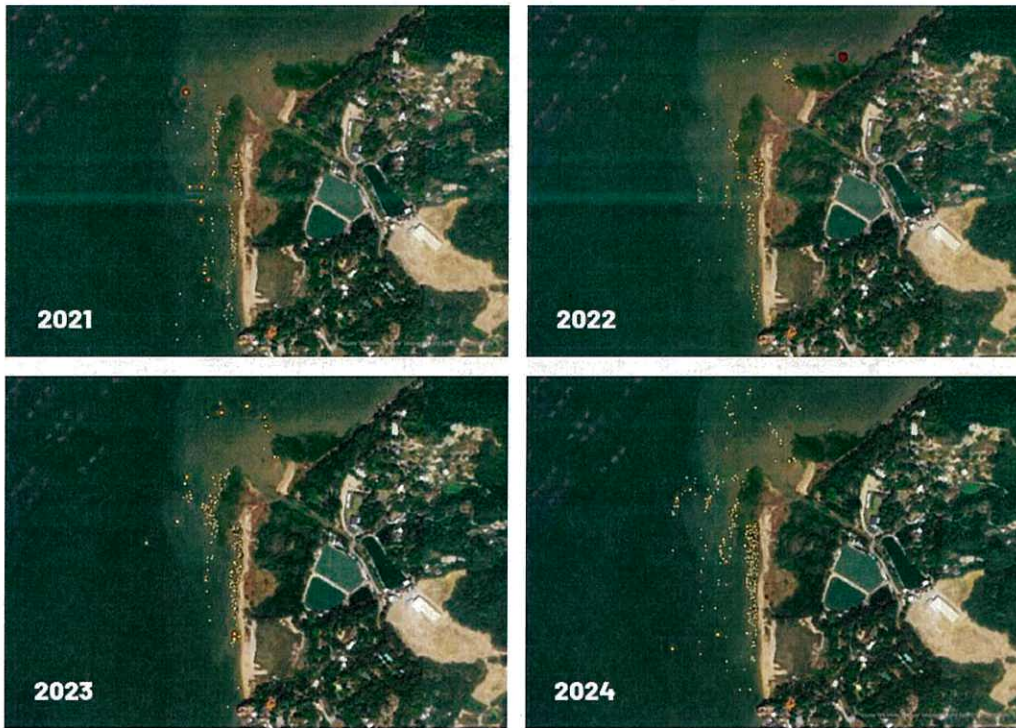


Figure 5. Increase in Horseshoe crab distribution on Pak Nai's mudflats from summer 2021 to summer 2024 (© TNC)

The community conservation program, alongside the Ha Pak Nai Education Center itself, has served as a model that we hope can inspire sustainable eco-tourism activities in Deep bay, especially given the current plans under the Northern Metropolis policy to develop the coastal areas from Tsim Bei Tsui, Lau Fau Shan and Pak Nai into a Coastal Protection Park system, which will focus on ecotourism and nature conservation. In this regard, the Ha Pak Nai Education Center has been a pioneer in instigating an ecotourism model that can benefit both local communities and local biodiversity, and retracting support to its operation would be short-sighted.



Figure 6. TNC school field trips supported by the centre (© TNC)

Attached is a list of some of the organizations that have been participating in TNC Pak Nai's activities from 2021 to 2025. If you have any questions, please feel free to contact me at [REDACTED]

Sincerely,

ZUAW Tsz Kin

Tom CHAN Tsz Kin
 Community Conservation Manager,
 The Nature Conservancy Hong Kong

Appendix A: List of organizations participated in TNC Pak Nai activities

Aberdeen Baptist Lui Ming Choi College	L'Oreal
Baptist Oi Kwan Social Service	La Salle College
Baptist Rainbow Primary School	Li Po Chun United World College of Hong Kong
Baptist Wing Lung Secondary School	Liu Chong Hing Investment Ltd
Bloomberg	Member's Care HKJC Volunteer Team
Capital Group	Morgan Stanley
Carmel Bunnan Tong Memorial Secondary School	Outdoor Wildlife Learning Hong Kong
City University of Hong Kong	Patagonia Hong Kong
City'super	PHC Wing Kwong College
College of Professional and Continuing Education, The Hong Kong Polytechnic University	Po Leung Kuk Life Planning & Financial Education Centre
Cordis, Hong Kong	Round Table Education
Deutsche Bank	Sacred Heart Canossian College
Germany Miele	Schroders Hong Kong
GreenPrice	Shun Tak Fraternal Association Tam Pak Yu College
Hermès HK	SKH Tin Shui Wai Ling Oi Primary School
HH Global	St Stephen's College
HKBU Affiliated School Wong Kam Fai Secondary and Primary School	Swire Coca-Cola
HKU SPACE Po Leung Kuk Stanley Ho Community College	Tang King Po School
HKUGA College	The Chinese University of Hong Kong
Hong Kong Baptist University	The Hong Kong Institution of Engineers
Hong Kong Red Cross Princess Alexandra School	The Hong Kong University of Science and Technology
Howden Insurance	The Swire Charitable Trust
Inspiring Girls Hong Kong	The True Light School of Hong Kon
J.P. Morgan Hong Kong	The University of Hong Kong
Jockey Club Man Kwan EduYoung College	The Y.W.C.A Hioe Tjo Yoeng College
Knight Frank	The Zubin Foundation
Kowloon Sam Yuk Secondary School	UBS Hong Kong
Kowloon True Light School	Wah Yan College Kowloon
Kwun Tong Maryknoll College	WWF-Hong Kong

-End-

香港海洋公園保育基金 Ocean Park Conservation Foundation, Hong Kong

No. 283A, Nim Wan Road
Ha Pak Nai Tsuen
Ha Pak Nai Education Centre
Mr. CHENG Wai Kwan



Confirmation of Utilization of 下白泥村教育中心

Dear Mr Cheng,

This letter is to confirm our organization has been utilizing 下白泥村教育中心 (Centre) to conduct educational programmes during 2020-2023.

The Centre has provided us with a welcoming environment conducive to learning and community engagement. This has enabled us to offer workshops on intertidal mudflat and endangered horseshoe crab conservation, as well as field activities like s cleanup activity that advocate for enhanced educational outcomes.

Yours sincerely,

A handwritten signature in blue ink, appearing to read 'Josephine Wong'.

Josephine Wong
Deputy Director

Urgent Return receipt Expand Group Restricted Prevent Copy Confidential

Christina Ki Na LEE/PLAND

寄件者: Christina Ki Na LEE/PLAND
寄件日期: 2026年05月13日星期三 10:10
收件者: tpbpd/PLAND
副本: 'Jeff'
主旨: Fw: A/YL-PN/89 supplementary information
附件: 避車處位置圖2.pdf; 布局陳述2.pdf

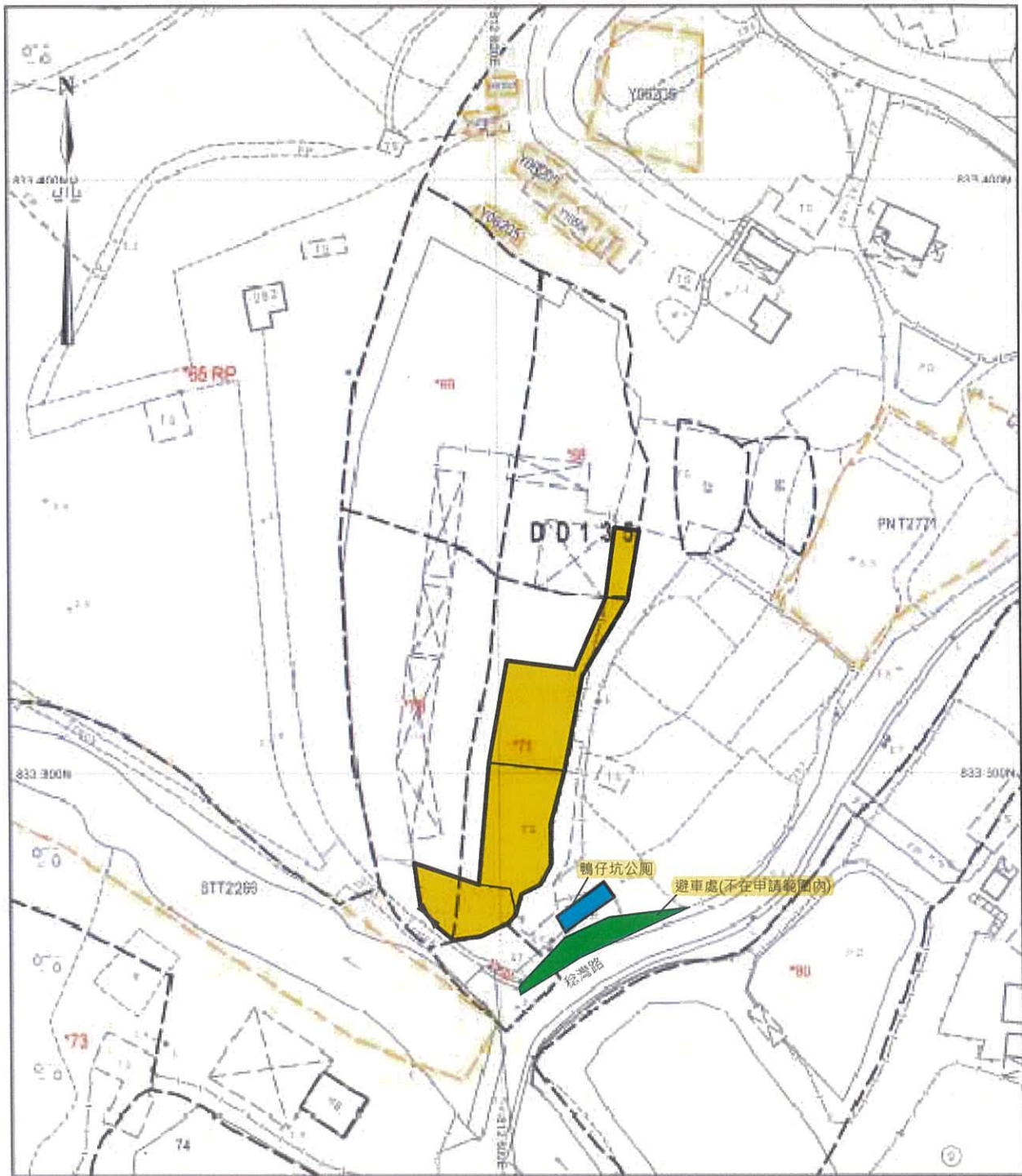
From: Jeff [REDACTED]
Sent: Tuesday, May 12, 2026 11:14 PM
To: Christina Ki Na LEE/PLAND <cknlee@pland.gov.hk>
Subject: Re: A/YL-PN/89 supplementary information

Dear Miss Lee,

Please find the updated information.

Best regards
Jeff

地段索引圖 LOT INDEX PLAN



地政總署測繪處 Survey and Mapping Office, Lands Department

比例尺 SCALE 1 : 1 000

metres 10 0 10 20 30 40 50 60 metres



<p>Project 項目名稱 :</p> <p>新界元朗白泥丈量約份第135約地段第68號(部份)、第70號(部份)及第71號(部份)土地</p>	<p>Remarks 備註 :</p>	<p>Scale 比例 :</p> <p>1 : 1000</p>
<p>Drawing Title 圖紙標題 :</p> <p>位置圖</p>	<p>Drawing No 圖紙號 :</p> <p>圖 1</p>	